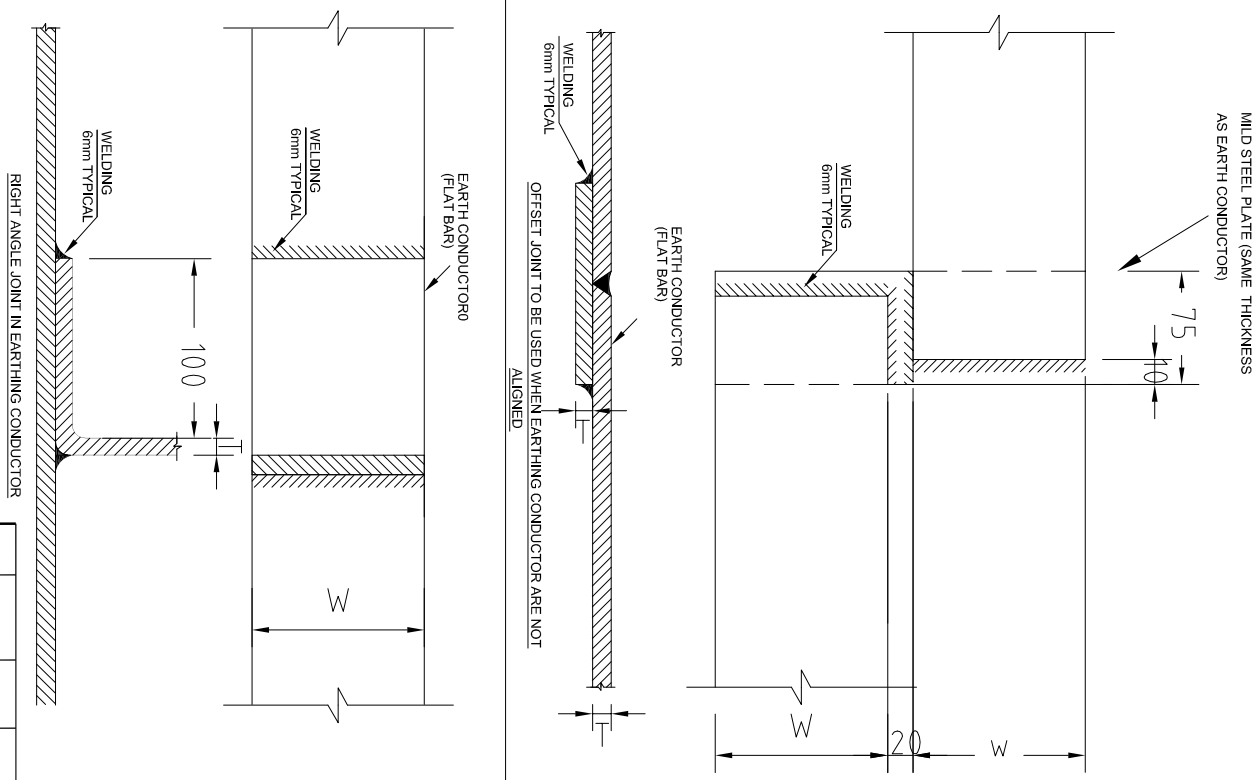
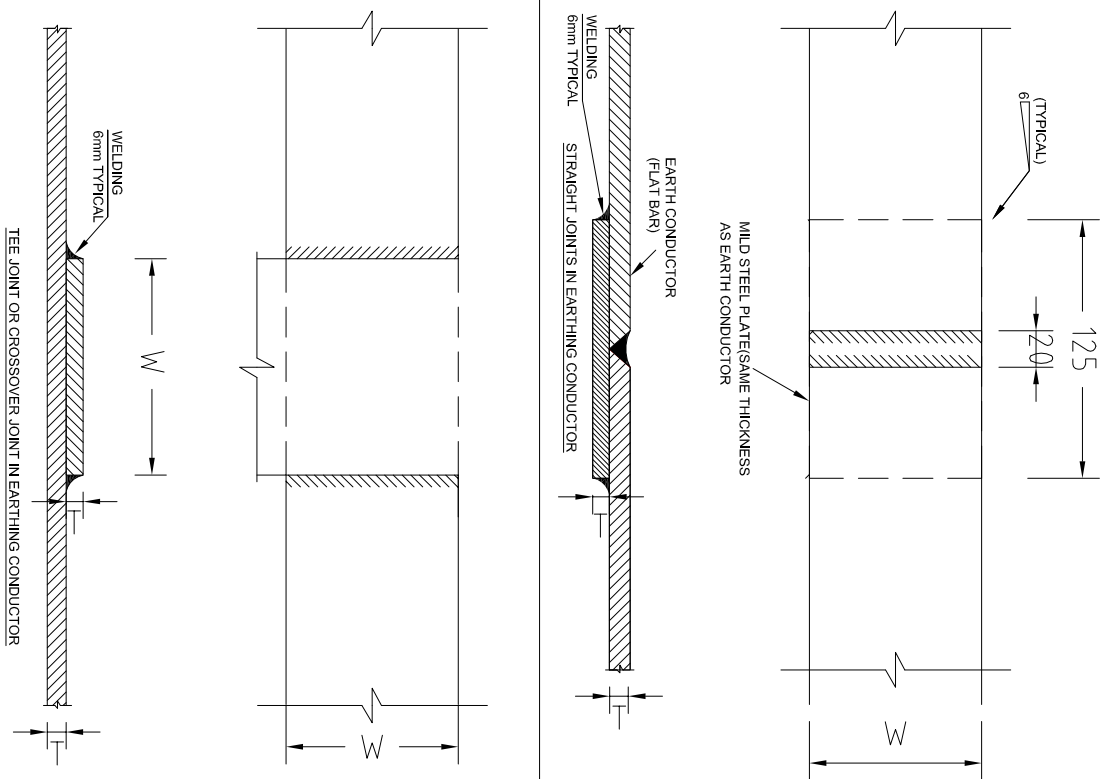


THE INFORMATION CONTAINED HEREIN IS CONFIDENTIAL AND NOT FOR PUBLICATION, BEING THE PROPERTY OF NINE PHARMAPLAN INDIA LIMITED, THE INFORMATION IS ISSUED ON THE UNDERSTANDING THAT NO PART THERE OF SHALL BE COPIED OR COMMUNICATED TO A THIRD PARTY WITHOUT AUTHORISATION IN WRITING FROM NINE PHARMAPLAN INDIA LIMITED.



NOTES:

1. ALL DIMENSIONS ARE IN MILLIMETERS (mm)
2. ALL STEEL BAR & PLATE SHALL BE GALVANIZED
3. ALL DAMAGE TO GALVANIZED FINISHED SHALL BE MADE GOOD WITH ZINC RICH PAINT

(TYPICAL)

6 mm FILLET WELD

W WIDTH OF EARTH CONDUCTOR

T THICKNESS OF EARTH CONDUCTOR

[illegible]